



## 1 Cap Tips

1.1 Male

1.2 Female

## Cap Tips

**Electrodes in contact with the base metal (the object being welded)**



**A**pplication

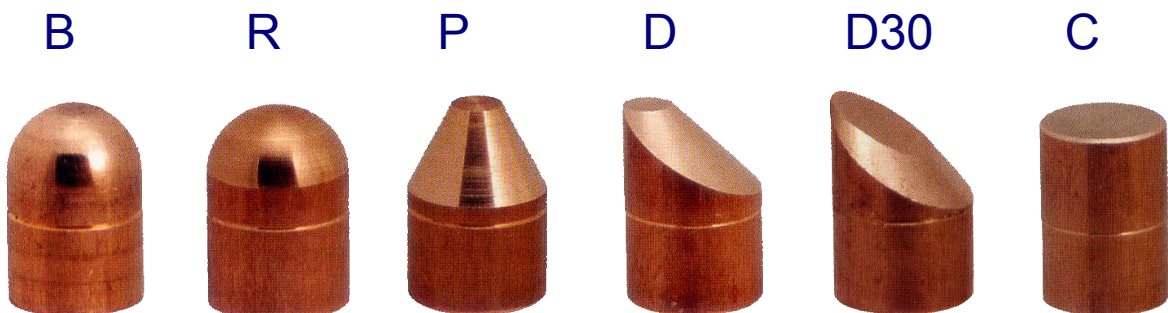
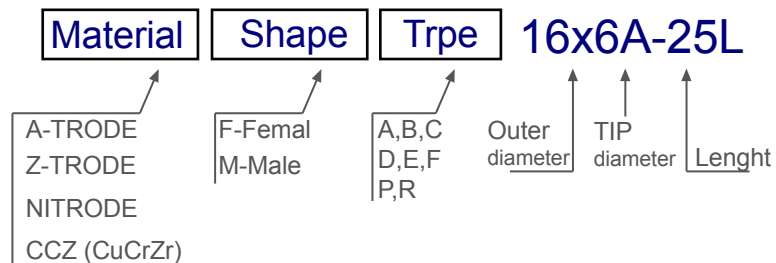
- Used mainly for shanks, gun arms, etc.
- The end tapered part of our chips are cut and shank-fitted so they do not come off easily
- Chips are re-ground because a dot control process is applied
- All BeA50 cap tips are manufactured by special order



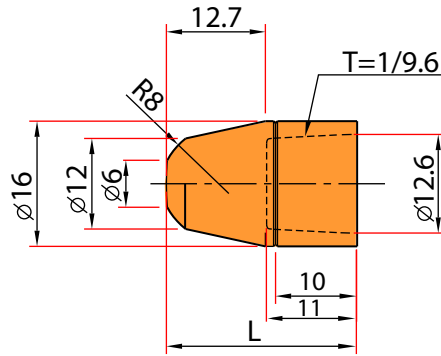
**S**pecial Features

- 1 The three main materials A-TRODE, Z-TRODE, NITRODE and CCZ (CuCrZr)
- 2 The cap tips material is selected according to the material of the base metal to be welded

Cap Tips



## Cap Tip Type A $\varnothing 16$

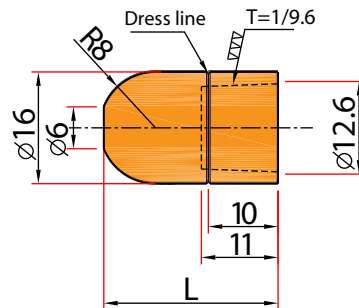


Cap Tip Material FA  $\varnothing$ Outer  $\varnothing$ Tip Length B x A A-R r

- A-TRODE
- Z-TRODE
- NITRODE
- CCZ (CuCrZr)

Model No.	L
FA 16x6A-R8	23

## Cap Tip Type B $\varnothing 16$

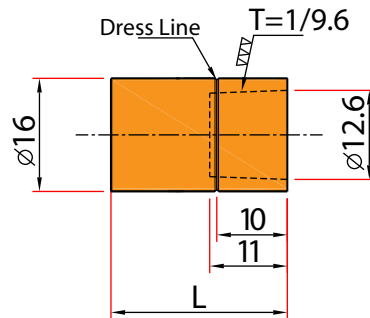


Cap Tip Material FB  $\varnothing$ Outer  $\varnothing$ Tip Length B x A A-L L

- A-TRODE
- Z-TRODE
- NITRODE
- CCZ (CuCrZr)

Model No.	L
FB 16x6A-23L	23
FB 16x6A-25L	25

## Cap Tip Type C $\varnothing 16$

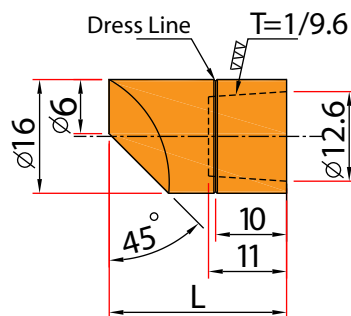


Cap Tip Material FC  $\varnothing$ Outer Length B - L L

- A-TRODE
- Z-TRODE
- NITRODE
- CCZ (CuCrZr)

Model No.	L
FC 16-23L	23
FC 16-25L	25

## Cap Tip Type D $\varnothing 16$

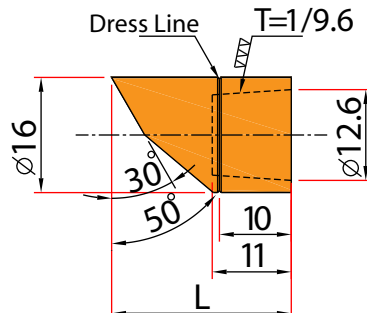


Cap Tip Material FD  $\varnothing$ Outer  $\varnothing$ Tip Length B x A A - L L

- A-TRODE
- Z-TRODE
- NITRODE
- CCZ (CuCrZr)

Model No.	L
FD 16x6A-23L	23
FD 16x6A-25L	25

## Cap Tip Type D30 $\varnothing 16$



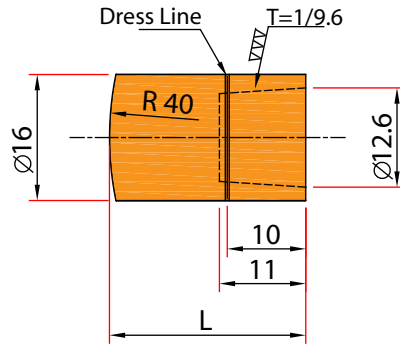
Cap Tip Material FD30  $\varnothing$ Outer  $\varnothing$ Tip Length B x A A - L L

- A-TRODE
- Z-TRODE
- NITRODE
- CCZ (CuCrZr)

Model No.	L
FD30 16x6A-23L	23
FD30 16x6A-25L	25

1

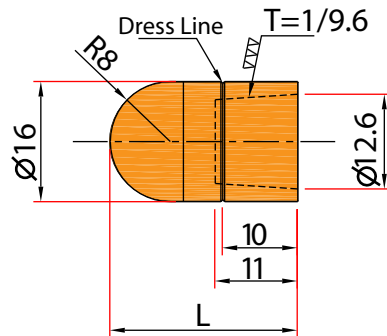
## Cap Tip Type F $\varnothing 16$



Cap Tip Material FF  $\varnothing$ Outer Radius  $\times$  R  $\times$  r  $\times$  L L  
 → A-TRODE  
 → Z-TRODE  
 → NITRODE  
 → CCZ (CuCrZr)

Model No.	L
FF 16xR40x23L	23
FF 16xR40x25L	25

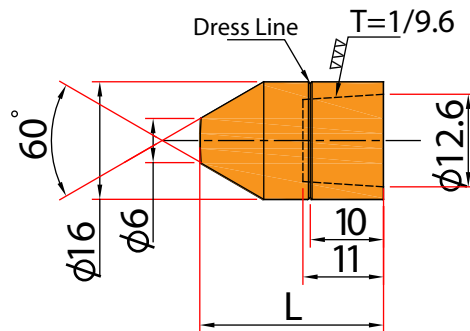
## Cap Tip Type R $\varnothing 16$



Cap Tip Material FR  $\varnothing$ Outer radius  $\times$  R  $\times$  R- L L  
 → A-TRODE  
 → Z-TRODE  
 → NITRODE  
 → CCZ (CuCrZr)

Model No.	L
FR 16x8Rx23L	23
FR 16x8Rx25L	25

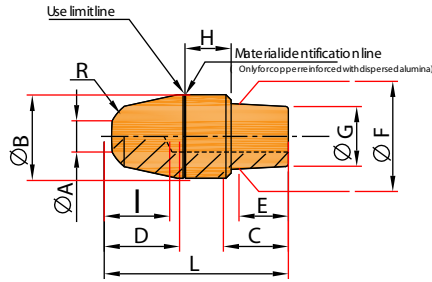
## Cap Tip Type P $\varnothing 16$



Cap Tip Material FP  $\varnothing$ Outer  $\varnothing$  Tip  $\times$  A - L L-H°  
 → A-TRODE  
 → Z-TRODE  
 → NITRODE  
 → CCZ (CuCrZr)

Model No.	L	H
FP 16x 6A x23L	23	60
FP 16x 6A x25L	25	60

## Cap Tip Type A $\varnothing 16$

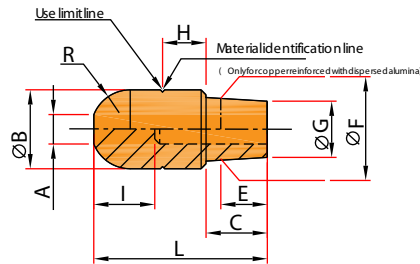
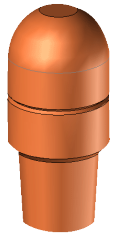


Cap Tip **Material** MA **B** x **A** - **R** **r**

- A-TRODE
- Z-TRODE
- NITRODE
- CCZ (CuCrZr)

Model No. L

## Cap Tip Type B $\varnothing 16$

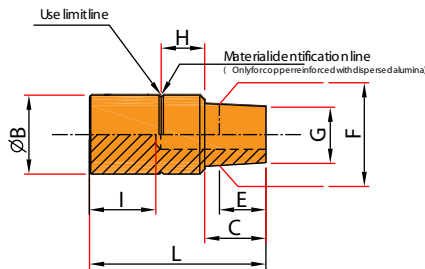
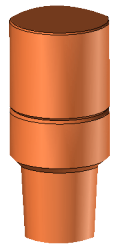


Cap Tip **Material** MB **B** x **A** - **L** **L**

- A-TRODE
- Z-TRODE
- NITRODE
- CCZ (CuCrZr)

Model No. L

## Cap Tip Type C $\varnothing 16$

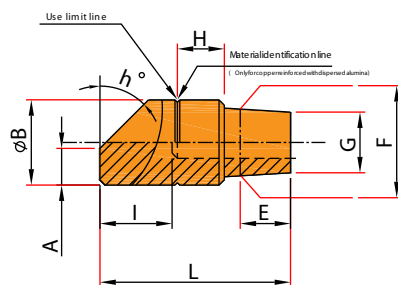
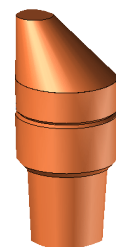


Cap Tip **Material** MC **B** - **L** **L**

- A-TRODE
- Z-TRODE
- NITRODE
- CCZ (CuCrZr)

Model No. L

## Cap Tip Type D $\varnothing 16$

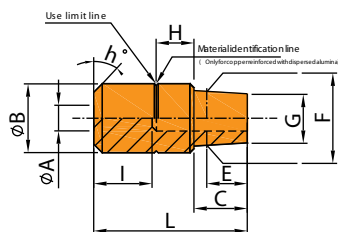
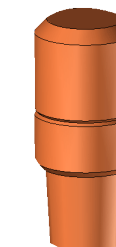


Cap Tip **Material** MD **B** x **A** - **L** **L**

- A-TRODE
- Z-TRODE
- NITRODE
- CCZ (CuCrZr)

Model No. L

## Cap Tip Type E $\varnothing 16$



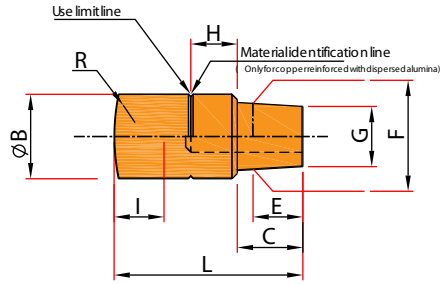
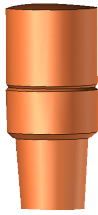
Cap Tip **Material** ME **B** x **A** - **L** **L**

- A-TRODE
- Z-TRODE
- NITRODE
- CCZ (CuCrZr)

Model No. L

1

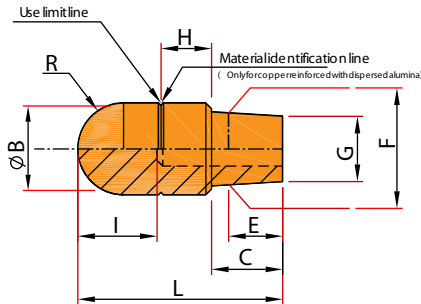
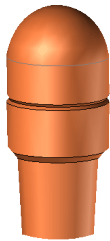
## Cap Tip Type F $\varnothing 16$ Cap Tips male



Cap Tip  $\varnothing$ Outer  $\varnothing$ Tip Length  
Material MF B x A A - L L  
 → A-TRODE  
 → Z-TRODE  
 → NITRODE  
 → CCZ (CuCrZr)

Model No.	L

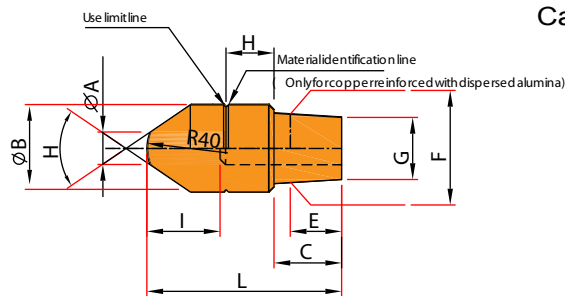
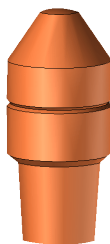
## Cap Tip Type R $\varnothing 16$



Cap Tip  $\varnothing$ Outer  $\varnothing$ Tip Length  
Material MR B x A A - L L  
 → A-TRODE  
 → Z-TRODE  
 → NITRODE  
 → CCZ (CuCrZr)

Model No.	L

## Cap Tip Type P $\varnothing 16$



Cap Tip  $\varnothing$ Outer  $\varnothing$ Tip Length  
Material MP B x A A - L L  
 → A-TRODE  
 → Z-TRODE  
 → NITRODE  
 → CCZ (CuCrZr)

Model No.	L